



FLT-01

TABLE LIFT SET WITH TOP - SINGLE - 2 STEP - STROKE SIZE 18.1"

The FLT-01 is a single column table lift set with an 18.1" stroke size and 175 lbs of force. This model comes with a power supply and remote for simple up/down motion control. It comes with a table top included so you have everything you need for your ideal adjustable table.





CAUTION/INFORMATION

| | | | |
|--|--|--|--|
| | <p>Make sure no obstacles are in the desk's path. Make sure the desktop is not touching any walls. Make sure all cords are appropriate length to accommodate the change in height.</p> | | <p>WARNING Pinch Point Keep hands and fingers clear.</p> |
| | <p>Keep children away from electric height-adjustable desks, control units and handsets. There is a risk of injury and electric shock.</p> | | |
| | <p>Keep all electrical components away from liquids.</p> | | |
| | <p>Do not sit or stand on the desk frame. Do not crawl or lie under the desk frame.</p> | | |
| | <p>Do not place any objects taller than 20" underneath the desk.</p> | | |
| | <p>Do not open any of the components - the Legs, Control Box, or Switch. There is a danger of electric shock.</p> | | |
| | <p>This product is designed with a duty cycle of 10% (2 min. on, 18 min. off).</p> | | |
| | <p>In the event of a power outage or if the power cord is unplugged, a manual reset may be necessary - see Step 7.</p> | | |

USE/LIABILITY

This height adjustable desk has electric motors and is designed for use in dry work areas only. The desk height is adjustable so that it can be positioned at the most ergonomically suitable height.

Any other use is at user's risk.

Under no circumstances does the manufacturer accept warranty claims or liability claims for damages caused from improper use or handling of the desk frame.

IMPORTANT:

Please read this manual carefully.

If this desk is sold, please provide this manual to the buyer.

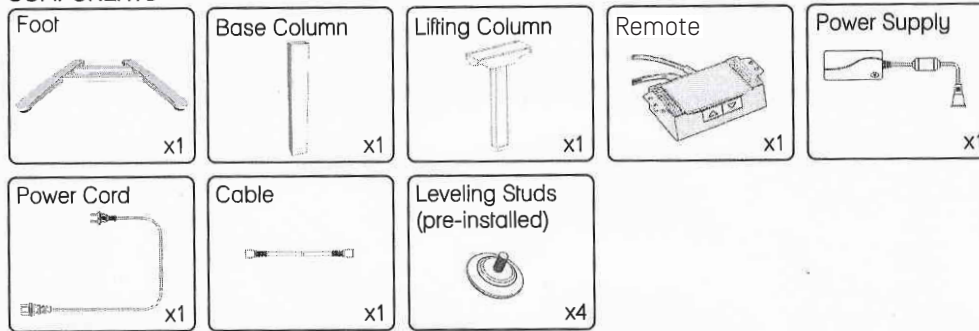


PARTS

TOOLS REQUIRED



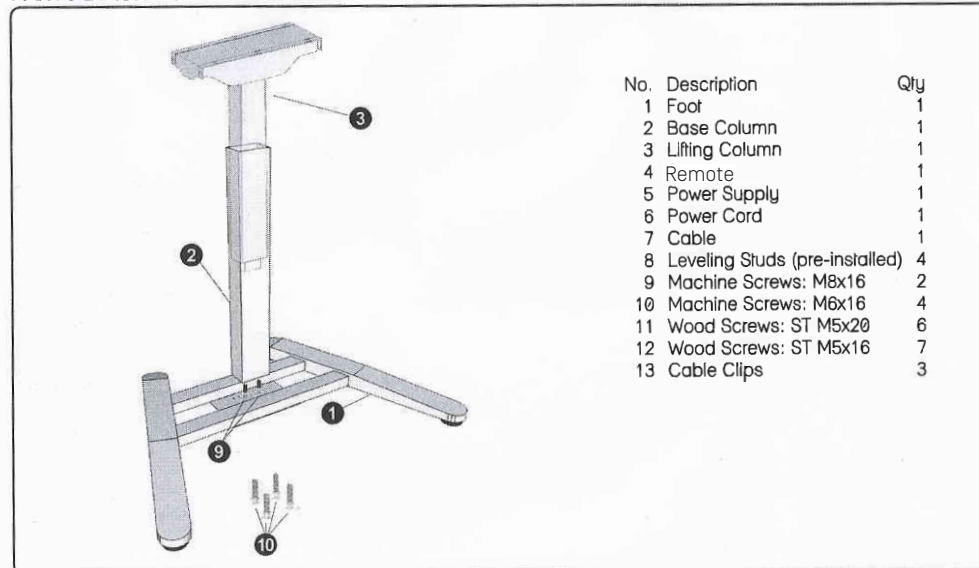
COMPONENTS



HARDWARE



PARTS DIAGRAM





ASSEMBLY INSTRUCTIONS

STEP 1

Lay out all the included components and hardware to ensure you have everything listed on the parts page.

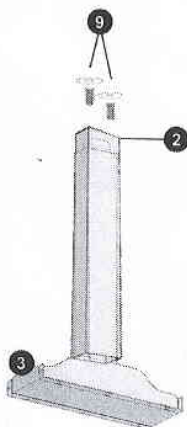
Take the Lifting Column (P3) and place it upside down. Then slide the Base Column (P2) over the Lifting Column (P3) until it is fully inserted.



STEP 2

When sliding the Base Column (P2) over the Lifting Column (P3) make sure to line up the holes in the bottom of the Base Column (P2) with the holes in the bottom of the Lifting Column (P3). In order to line up the holes you may need to adjust the Base Column (P2) a bit until both holes line up.

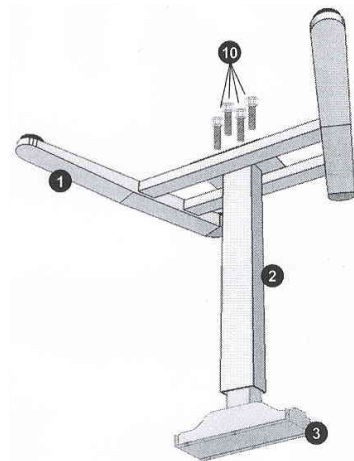
Secure the Base Column (P2) to the Lifting Column (P3) with the two M8x16 Machine Screws (P9) and using the supplied Allen Wrench, tighten the two screws until secure.



STEP 3

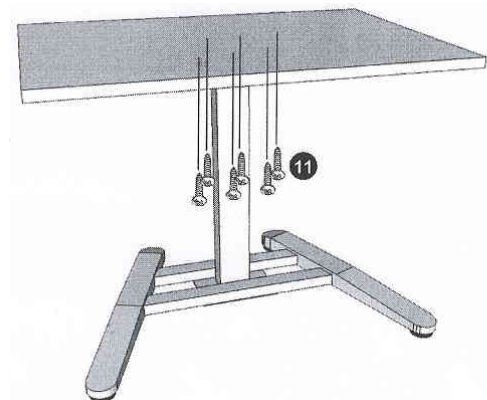
For this step we recommend using two people to be safe. Turn the Foot (P1) upside down and place the steel plate in the center over the Base Column (P2).

Secure the Foot (P1) to the Base Column (P2) with the four M6x16 Machine Screws (P10). Using the supplied Allen Wrench, tighten the screws until secure.



STEP 4

For this step we recommend pre-drilling the included desktop before attaching it to the Lifting Column (P3). Turn your assembled desk base right-side up and place the desktop atop it. Using the six M5x20 Pan Head Wood Screws (P11), secure the desktop to the desk base. Make sure not to damage the desktop surface when securing the screws.

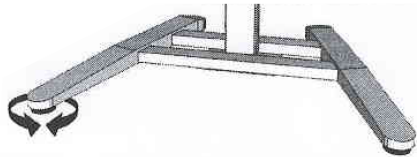




ASSEMBLY INSTRUCTIONS

STEP 5

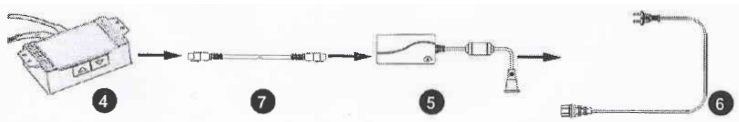
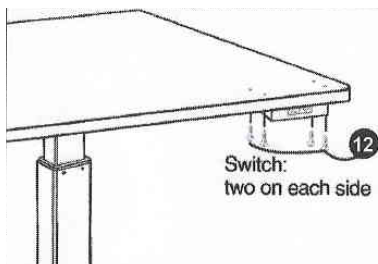
Adjust the four Leveling Studs in the Foot (P1) as needed.



STEP 6

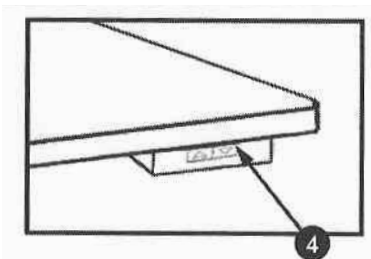
Attach the Remote (P4) to the underside of the desktop with the four M5x16 Pan Head Wood Screws (P12). Then connect the Remote (P4) to the Power Supply (P5) using the Cable (P7). Finally connect the Power Cord (P6) to the Power Supply (P5).

Use the adhesive-backed Cable Clips (P13) to secure the wires so they don't get in the way.



STEP 7

Plug the Power Cord (P6) into a 110V outlet.



IMPORTANT

You **MUST** reset the table lift prior to use.

RESET PROCEDURE



Caution: Ensure that cables are not obstructing the path of the Lifting Column (P3) before proceeding



1. Press and hold the down button for 20 seconds. The desk will lower all the way, rise slightly and then stop moving. This signals the end of the reset procedure.

2. Release the down button

Your desk is now ready!



CAUTION:

- MAKE SURE ALL CORDS ARE APPROPRIATE LENGTH FOR DESK TRAVEL.
- ALSO ENSURE THAT NO OBSTACLES ARE IN THE DESK'S PATH AND THE DESKTOP IS NOT TOUCHING ANY WALLS.



TROUBLESHOOTING

If your desk is not functioning properly it may need to be reset. Unplug the power cord for 20 seconds. Plug the power cord back in and follow the RESET procedure outlined in Step 7.

You may need to do this if the desk base is ever unplugged or loses power.

If the desk seems to be uneven, you may need to adjust the leveling studs at the bottom of the desk base.

TECHNICAL SPECIFICATIONS

| | |
|-----------------|---|
| Height Range | 26.6" - 44.7" |
| Travel Speed | 0.8" per second (varies, slowest w/ max load) |
| Weight Capacity | 175 lbs. |
| Duty Cycle | 10% Max. 2 mins on, 18 mins off |
| Features | Soft start/stop |
| | Adjustable leveling studs |